

# V•ROD POLY 46

## GLASS FIBER REINFORCED POLYMER (GFRP) REBAR

REVISION: January, 2025

### Product Data Sheet - V•ROD POLY 46

		#2	#3	#4	#5
Minimum tensile strength (ASTM D7205)	MPa	1 000			
Minimum V•ROD tensile load capacity	kgf	3 200	7 200	13 000	20 300
Average steel tensile load capacity	kgf	1 495	3 300	5 895	9 150
Minimum tensile modulus	GPa	46			
Weight	g/m	64	147	254	402
Measured diameter	mm	7.35	10.1	13	16.1
Nominal cross-sectional area*	mm <sup>2</sup>	31.7	71.3	126.7	197.9



4X Lighter  
Than Steel



2,5 X Stronger  
Than Steel



Resilient



Durability /  
Corrosion  
Resistance



Radio /cellular  
waves permeable

Only  
900 grams  
per 6 m  
long bar !



700, 9<sup>e</sup> Rue Nord, Thetford Mines (Quebec) CANADA G6G 6Z5  
sales@fiberglassrebar.com  
Phone: 418-335-3202 | Fax: 418-335-5117 | [vrod.ca](http://vrod.ca)



# RAISING THE BAR

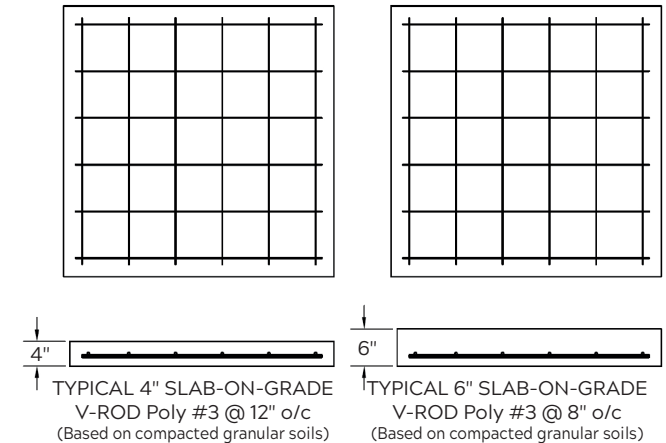
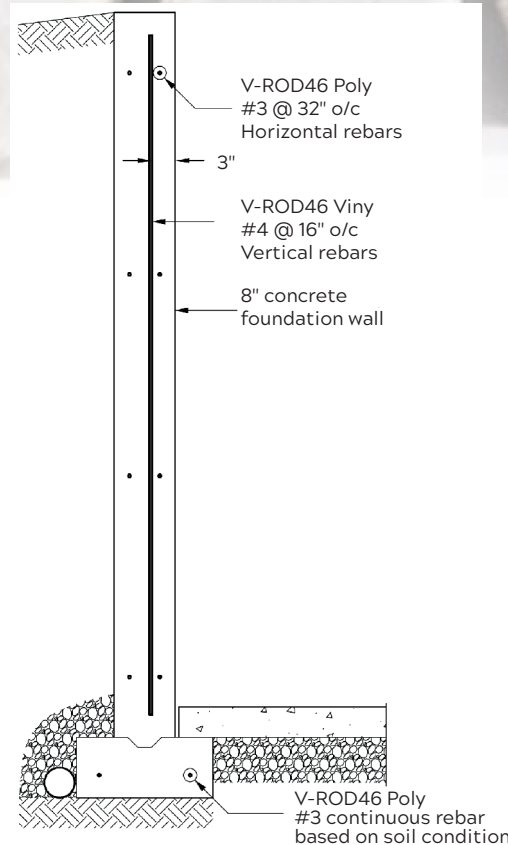
**V-ROD  
POLY**  
ICC-ES CERTIFIED PRODUCT

## V-ROD Poly fiberglass rebar offers many advantages:

- 4 times lighter than steel means; easier to install, less placement time and reduced transportation cost.
- 4 times lighter also means reduced physical burden on workers, less injuries and reduced down time.
- V-ROD is resilient; Unlike steel, when stepped/driven on, V-ROD will deform and get back to its original shape
- V-ROD's sand coating and higher tensile strength provides with the best crack control among any kind of rebar available on the market.
- V-ROD does not rust! No more cracks due to corrosion.
- Bar certs to be provided on every lot
- Radio/cellular waves permeable

## V-ROD is well suited for:

Slab on grade, Basement, Garage, Foundations, Commercial Slabs, Sidewalk...



It should be noted that these drawings are for reference only and depend on the project requirements. The same reinforcement is shown for V-ROD40 and V-ROD46.

Basement slabs	Garage slabs	Foundation walls	Commercial slabs
<ul style="list-style-type: none"> <li>• V-ROD Poly</li> </ul>	<ul style="list-style-type: none"> <li>• V-ROD Poly for light vehicles (not exceeding 4 tons)</li> <li>• Engineering required for heavy loads</li> </ul>	<ul style="list-style-type: none"> <li>• V-ROD Poly for horizontal</li> <li>• Engineering required for heavy loads</li> </ul>	<ul style="list-style-type: none"> <li>• V-ROD Poly for light loads (less than 100 PSF for instance)</li> <li>• Engineering required for heavy loads</li> </ul>